



SCHUCK GROUP

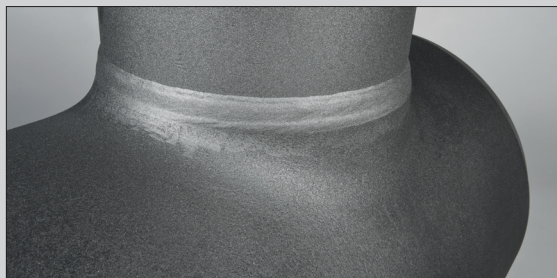
SCHUCK TEES

For divergences in pipeline systems.



SCHUCK TEES

For divergences in pipeline systems.



APPLICATIONS

Oil, gas, acid gas and water in pipeline construction and plant construction

Temperature range: -10°C to $+50^{\circ}\text{C}$

Special model: -40°C to $+150^{\circ}\text{C}$

Can be installed underground or aboveground

Nominal sizes up to DN1600

Operating pressure up to PN320



MANUFACTURING

DIN 2470 - Section 1

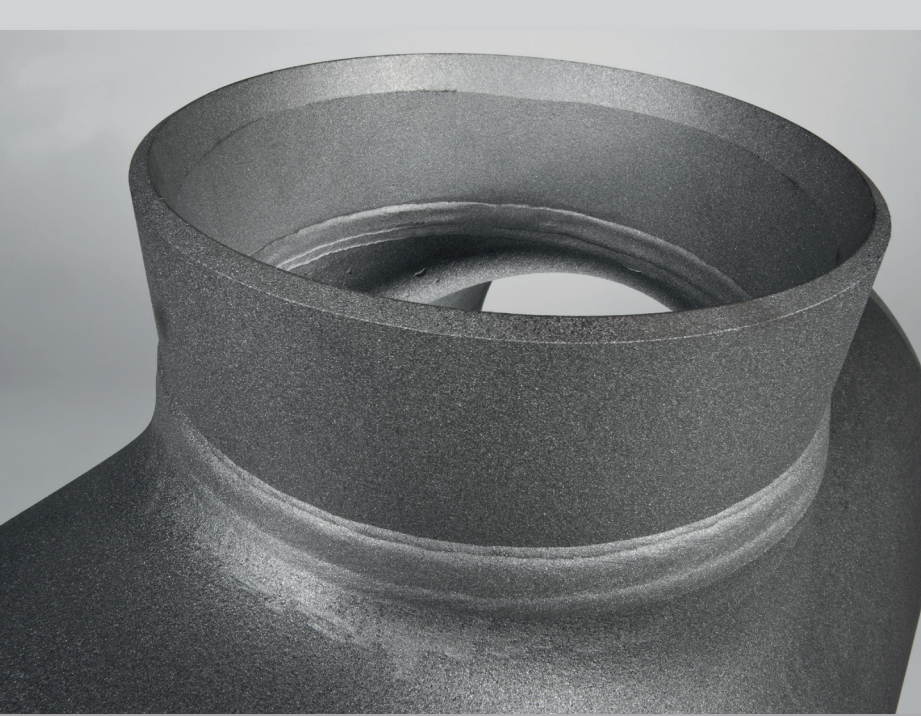
DVGW (German Association for Gas and Water) work sheet G 463

TRFL (technical regulations for pipelines)

ASME code and other international standards / specifications

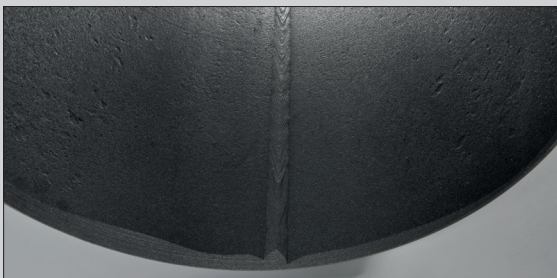
Customer's specification

Certificate as per EN 10204, 3.1 and 3.



PRODUCT FEATURES

- » Can be delivered with several divergences, if desired
- » Processing equipment and testing equipment make it possible to set up various corrosion protection systems
- » An internal lining of concrete or plastic can be applied, in order to make it possible for the item in question to be used in water lines
- » Available as a welded structure or a flared structure
- » Also available as a divided tee
- » Connections - In the form of flanges or weld-on end



DESIGN

welded nozzles

Single shaped pieces or distribution system with several extrusions / branches

Also available as a divided tee

With pig guide bars, if desired

MATERIALS

Standard materials:

≤ PN16: As per section 1 of DIN 2470

>PN16: As per G463

Pipes:

L360NB as per EN 10208

L290 NB as per EN 10208

Sheets:

P355 NH/NL1 as per EN 10028-3

P460 NH/NL1 as per EN 10028-3

Other materials that are in accordance with the norm, the specification or customer specifications can be used upon request



SCHUCK GROUP

Franz Schuck GmbH
Daimlerstraße 5–7
89555 Steinheim, Germany

Fon +49. (0) 7329. 950 -0
Fax +49. (0) 7329. 950 -161

info@schuck-group.com
www.schuck-group.com

We manufacture and distribute components for connecting pipeline systems in more than 50 countries, with 5 international offices and over 40 years of experience.

Do you want to find out more about a specific product?
Give us a call, or visit to our website at www.schuck-group.com.



SCHUCK GROUP

DESIGN
ENGINEERING
MANUFACTURING
MADE IN GERMANY